



*Friends of
St. Botolph's Church,
Heene*

FOSBCH - Raising the profile of our church in
Worthing, raising funds, and having fun!

Become a friend of St. Botolph's Church, Heene and receive regular updates on what is happening at the church, including details of forthcoming fundraising events and reports on earlier ones.

Church e-mail:
churchwardens@virginmedia.com
for further information

or

Contact Jackie on 01903 202036 or by email
jackie.didymus@virginmedia.com
to become a Friend and show your support for
our work in the local community.



St. Botolph's Church,
Lansdowne Road, Worthing,
BN11 4LY

St. Botolph's Church and the church rooms are available to hire and are suitable for many different occasions, including meetings, evening classes, music groups, small parties etc.

For full details and costs, or to book, contact the churchwardens on 01903 241673 or 01903 506855 or e-mail churchwardens@virginmedia.com

WELCOME!

St. Botolph's Church, Heene, on Lansdowne Road, Worthing is a friendly, traditional Church of England Church.

Our weekly Eucharist (communion) service includes hymns, readings, a psalm, sermon, sung communion setting, prayers and an anthem. There is a regular Friday Prayer Group.

The church has a very strong choral tradition, going back to it's foundation in 1873, and our adult RSCM choir leads the worship each week. They rehearse on Friday evenings and sing the service on a Sunday. New members in all voice parts are always welcome.

We are also very lucky to be one of the few churches locally with a ring of eight bells. The bells are rung at practices each Wednesday evening and before each Sunday Eucharist.

During the week the church rooms (attached to the building) are in frequent use, with a wide range of organisations using the building. Access is via the back entrance on Manor Road for most midweek events.

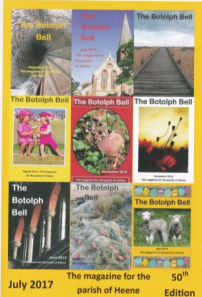
ST. BOTOLPH'S CHURCH HEENE



The Botolph Bell



The Magazine for the Parish of Heene
June 2017



The magazine for the parish of Heene
July 2017 50th Edition

The Botolph Bell



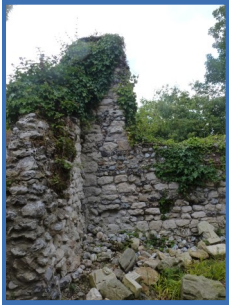
The Magazine for the Parish of Heene
August 2017

The Botolph Bell, the magazine for the parish of Heene, is our highly effective, 2000-distribution 'community mouthpiece'. We are a non-profit making venture and our advertising rates have remained the same for more than four years. Why don't you try boosting your local business with an advertisement in The Botolph Bell?

FULL PAGE: £50
HALF PAGE: £30
QUARTER PAGE: £20

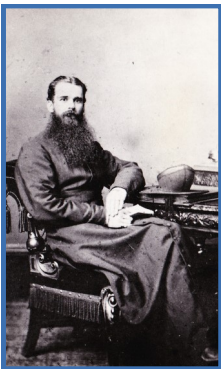
Contact: Nick Le Mare on 01903 241673

Brief Early History



The first church at Heene was almost certainly of Saxon date, and not on the current site. A church here, however, replaced it at some time during the 14th or 15th century and the ruin still visible near the chancel of our present-day church is believed to be part of the east end of this structure. The chapel fell into disuse in the 1730s

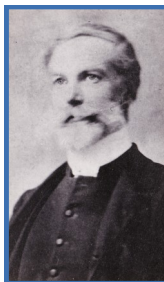
and a faculty was granted for its removal in 1766 although the work was done in rather a piecemeal fashion and we have been left with the ruin and various pieces of decorative stonework, including the bowl of the old font.



The foundation stone for the St. Botolph's we know today was laid in September 1872, after campaigning and fundraising for a new church was led by Broadwater curate Rev. Henry McLeod Beckles. The building (although still not fully completed) was consecrated on September 29th, 1873 by Bishop of Chichester, Dr. Durnford.

Rev. Beckles became the first Rector of Heene in 1873 and served in that capacity with much energy and enthusiasm, overseeing the first enlargement of the church in 1878. He died from 'flu on 6th January, 1892. Two West windows in the church were dedicated to his memory by the parishioners of the day, and a further window in the South aisle (showing the figure of the Good Shepherd) was given by his family and close friends.

St. Botolph's longest-serving Rector, Rev. John Prince Fallows, took on the parish in 1895 and saw many changes during his 35 year tenure of the post, including further enlargement of the building in 1904-5. During his ministry, there were no fewer than 13 Assistant Curates at Heene — with always two, and sometimes three of them, serving simultaneously!



Throughout the first 50 years of the building's history, St. Botolph's had just one verger — Mr. Oliver Holden. He was a skilful carpenter and joiner and made all the vestry furniture, the Litany desk and alms boxes, as well as organising the layout of the burial ground in Manor Road.



The church has some very beautiful stained glass windows, with two notable examples being those of St. Francis of Assisi and St. Richard, in the south aisle. These were made in 1953 by celebrated glass



artist, Lawrence Stanley Lee (September 1909—April 2011).

Find out more about the history of our church by looking round the exhibition in the north aisle.

Services, Regular Events and Contacts

Prayer Group, every Friday at 10.15am
(Contact: Cleo Roberts: 01903 823811)

Sung Eucharist, every Sunday at 10.00am.

See our website: <http://stbotolphsheene2015.com> for up to date details.

Other events:

Mondays, 10-11.00am Gentle Exercise Class

(Shafi: 0743 2597647 or shaf@whitecranemartialarts.co.uk)

Wednesdays, 10-11.30am U3A Inspired Instrumentalists

12 noon—1pm Instrumental Groups

(Tony Tournoff: 01903 208588 or fairwaysmusic@btinternet.com)

Wednesdays, 7.00-8.00pm Tai Chi

8.00-9.00pm Kick Boxing

8.00-9.00pm Oriental Dance

(Shafi: 0743 2597647 or shaf@whitecranemartialarts.co.uk)

Wednesdays, 7.30-9.00pm Bell Ringers' Practice

(Liz Lane, Tower Captain: 01903 501422 or liz.13lane@gmail.com)

Thursdays, 7.30-9.00pm Spring into Soul Community Choir

(Mike, Carol & Vanessa: 01903 533402 or 07906 831291 or info@springintosoul.co.uk)

Fridays, 10.30am-12 noon Coffee morning

(Sue Wadey: 01903 506855)

Fridays, 11.00-11.30am Home Ed. Recorder Group

12.00-1.00pm U3A Beginners' Recorder Group

(Jackie Didymus 01903 202036 or jackie.didymus@virginmedia.com)

Fridays, 7.30-8.45pm Choir Practice

(Philip Bailey, organist & choirmaster, 01903 503057 or no1sussexorganist@btinternet.com)

Fridays, 7.00-8.00pm (Monthly) Oriental Dance

Saturdays, 10.00-11.00am (Monthly) Oriental Dance

(Shafi: 0743 2597647 or shaf@whitecranemartialarts.co.uk)

Sundays, 12.15 for 12.45pm Monthly (usually 3rd Sunday)

Parish Community Lunch at The Burlington Hotel, Wordsworth Road, Worthing.

(Christine Roberts: 01903 527176)

Entrance for most of our mid-week events is via the Manor Road, Worthing door at the back of the church.

(Details are correct as of January 2018)

St. Botolph's Church does not currently have its own priest, but uses a team of retired clergy.

We welcome enquiries about weddings, banns of marriage, christenings and funerals.

Please contact the Churchwardens:

Paul Wadey on 01903 506855;

Diane Le Mare on 01903 241673

or e-mail churchwardens@virginmedia.com